

Green Carpenter Bee Conservation Project



Why?

The Green Carpenter Bee is a large iconic native bee species. It is beautiful jewel green in colour, and is friendly and harmless. The species is extinct on mainland South Australia and Victoria but still exists on Kangaroo Island. The species relies on soft wood to make its nests. However, extensive and repeated bush fires in conservation areas on Kangaroo Island have removed a large proportion of these soft wood nest materials thereby severely threatening the bee's existence. To bridge long periods of extreme low nest material in the fire affected areas, successful alternative (artificial) nesting stalks have been developed. Placing these nesting stalks at numerous sites in conservation areas and private properties will minimize risk of losing parts of the population to future bushfires. Ultimately the method may be used to re-introduce the species in areas where it became extinct.

How?

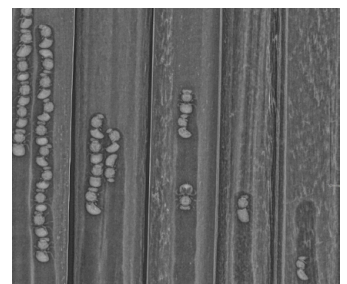
Nest substrates, made of balsa wood and resembling dead flower stalks of grass trees or dead Banksia trunks are placed in the fire affected areas. Each female carpenter bee excavates her own nest. Currently, there are more than 150 nests in these artificial stalks. On average a nest produces five new bees per year, of which half are females. Each nest last for up to three years. This is a long-term project: it will take more than 30 years after a fire to once again reach levels of adequate natural nest material. To safeguard the survival of this species the project needs to put out 300 new substrates each year.

The costs for producing, placing in the field and inspecting these nests are **\$5000 per year**.

Help us save the Green Carpenter Bee by supporting this research and conservation project.

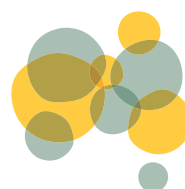


Clockwise from above: Male Green Carpenter Bee (*Xylocopa aenea*); Balsa wood substrate resembling Banksia trunks; Xanthorrhoea flower stalks; X-rays of overwintering branched nests with adult bees; a nest tunnel with brood cells. **Top:** Female Green Carpenter Bee.



We know how to save the Green Carpenter Bee but we need your support. A tax deductible donation will give it the chance it needs.

AustralianPollinatorWeek.org.au



**Australian
Pollinator
Week.**